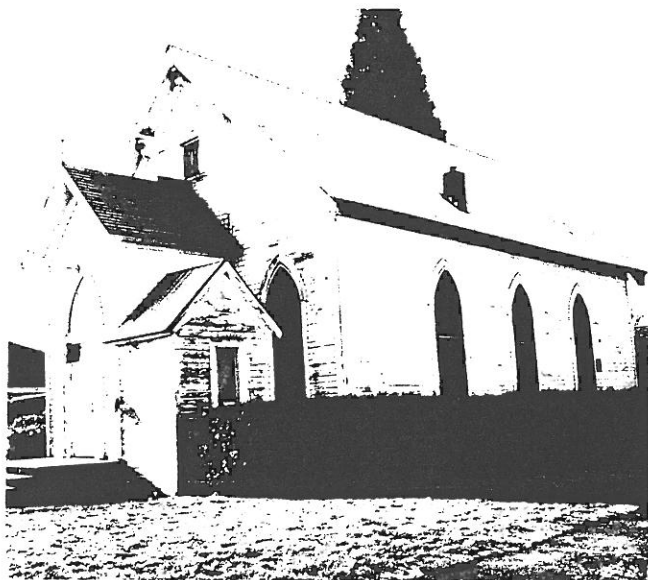


STATE OF OREGON INVENTORY  
OF HISTORIC PROPERTIES  
State Historic Preservation Office  
Oregon State Parks, Salem, OR 97310



County Linn  
Ranking \_\_\_\_\_  
Name  
(Common) Church of Christ  
(Historic) Unknown  
Address 600 Fifth Street  
Present Owner Church of Christ, c/o Ted Gay  
Address 34336 Hwy 228, Brownville, OR 97327  
Original Use Church  
Date of Construction Unknown  
Map Reference Number 28

-----  
Physical description of property and statement of historical significance:

This is a single-story Gothic Revival church with a steeply sloped gable roof and a rectangular floor plan. The roof is covered with sheet metal and the walls clad with horizontal siding and corner boards with simplified capitals. There is a central entrance porch with a gable. The door has been replaced. Above the entry there is a pointed arch containing three-light intersecting tracery. The verges are extended and there is a finial above the entry. On the south facade of the porch there is a one/one, double-hung, pointed arch window and on the north facade there is a low gable addition with a single-light window. On the east facade the porch is flanked by pointed arch, double-hung windows. The top sash contains three-light intersecting tracery and there are two lights in the bottom sash. The gable end features consoles at the peak and in line with the porch walls, a verge board with squared, bull's eye decorated ends, a leaded tracery window above the porch and a circular seal below the peak.

Both side facades contain three equally spaced, pointed arch, double-hung windows with three-light intersecting tracery in the upper sash and two lights in the lower one. There are screens in front of the windows and narrow moldings above the arches. An interior, concrete block chimney has been added near the center of the north facade. The three-sided apse on the west has a hip roof and two one/one, double-hung, pointed arch windows.

-----  
Recorded by Heritage Investment Corporation, 813 SW Alder, Portland, OR 97204 (228-0272)  
Allen, McMath-Hawkins, Architects, 213 SW Ash, Portland, OR 97204 (228-5154)

Initials \_\_\_\_\_ Date \_\_\_\_\_

Sources consulted:

