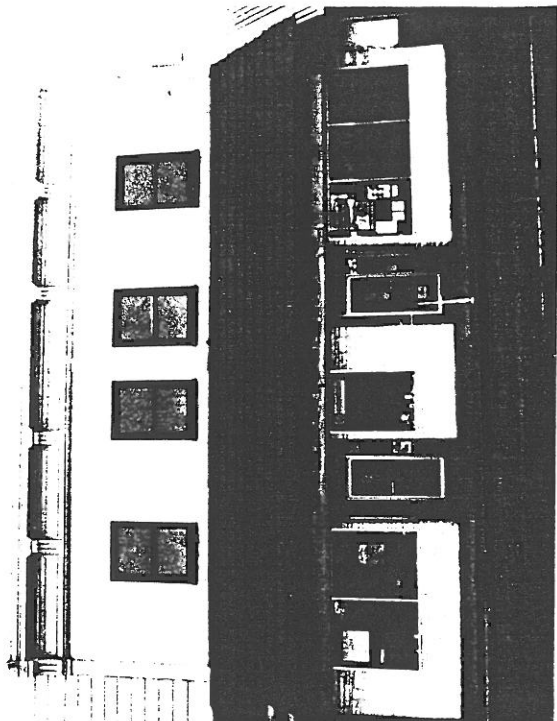


STATE OF OREGON INVENTORY
OF HISTORIC PROPERTIES
State Historic Preservation Office
Oregon State Parks, Salem, OR 97310



County Linn
Ranking _____
Name
(Common) Centwise Drugstore
(Historic) Devine Building
Address 671 Main Street
Present Owner Wyman, Summers
Address P.O. Box 145, Lebanon
Original Use commercial building
Date of Construction 1909
Map Reference Number 77

Physical description of property and statement of historical significance:

The Devine Building is a two-story Italianate commercial building with a flat roof and stuccoed brick walls. The building facade was originally divided into two separate stores with piers in the center and each corner. Each store had inset doorways and large, two-light storefront windows above low paneled walls. There were cloth awnings above multi-light transoms and triangular, cap-like decorations on the piers between floors. The windows and doors have been replaced with aluminum framed glass. The walls are clad with imitation rubble. The transoms have been replaced with a glass sign for "Cent Wise Drugs" which runs the full length below a new shingled awning.

On the second floor each bay contains two one/one, double-hung windows. The parapet is capped with a stamped metal, paneled frieze with brackets and a cornice. Cone-shaped finials have been removed from the corners. In the center there was a pediment with "J. C. DEVINE 1909" in raised letters and volutes on each side.

(continued)

Recorded by Heritage Investment Corporation, 813 SW Alder, Portland, OR 97204 (228-0272)
Allen, McMath-Hawkins, Architects, 213 SW Ash, Portland, OR 97204 (228-5154)

Initials _____ Date _____

Sources consulted: see attached.

Continuation Sheet 1 of 1
Devine Building
671 Main Street
Map Reference Number: 77

History


The Divine Building was constructed by John C. Devine in 1909. In 1912 the adjacent Lebanon Hotel, then a two-story wooden structure, burned down. In 1913, the hotel was replaced with a four-story reinforced concrete building with the second floors interconnected. A restaurant and barber shop serving the hotel were located on the ground level.

Devine was born November 18, 1848 in Harrisburg, Ohio. He moved to Albany where for nine years he operated a ferry over the Willamette River. He spent 18 years in Lebanon operating the Lebanon Hotel before selling out to Albert F. Wilson in 1912, who ran the hotel until it closed in 1953.

Wilson was born in Linn County near Lebanon on March 4, 1881, to parents who were pioneers in the area. He attended Behnke Walker Business College in Portland and engaged in general merchandising before becoming involved with the hotel. Wilson's wife was the daughter of John Devine and she was the first queen of the Strawberry Fair. She was also responsible for the cooking for which the hotel was renowned throughout the state.

Sources Consulted

1. "Advocate of Advancement, Lebanon Express, June 14, 1919.
2. Conversation with Mr. Wyman, March 20, 1984.
3. "Lebanon's New hotel to be Formally Opened," Hotel News, Portland, OR. April 24, 1913.



CENT WISE DRUGS

