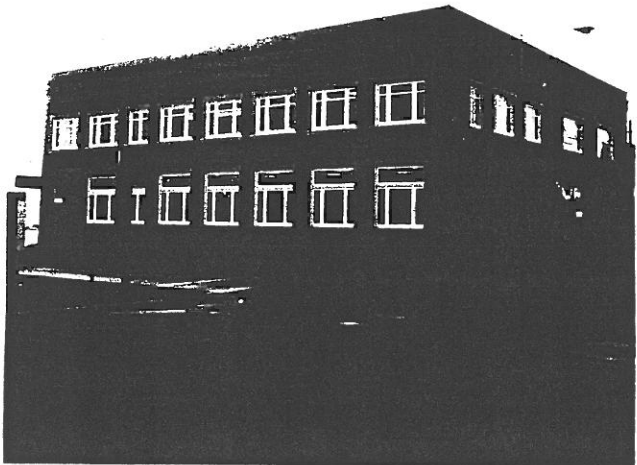


STATE OF OREGON INVENTORY  
OF HISTORIC PROPERTIES  
State Historic Preservation Office  
Oregon State Parks, Salem, OR 97310



County Linn  
Ranking \_\_\_\_\_  
Name  
(Common) First Interstate Bank  
(Historic) Lebanon National Bank  
Address 813 and 815 Main Street  
Present Owner First Interstate Bank and  
J.K. Weatherford Estate  
Address 813 Main Street and  
P.O. Box 667, Albany, OR  
Original Use Bank  
Date of Construction 1910  
Map Reference Number 93

Physical description of property and statement of historical significance:

The Lebanon National Bank is a two-story commercial building with a flat roof, a square floor plan, brick-clad walls and a concrete band along the base. The bank is located on the north side of the ground floor with stores on the south. The recessed bank entry, located near the center of the west facade, is framed with a light brick with a bronze plaque at the top featuring "First National Bank." On the north of the new double, aluminum frame, glass doors there is a night deposit safe with a large bronze bank seal. On the north of the entry there are two openings containing single light casement windows each side of a larger fixed light with a single light transom along the top. The center light in the window beside the entry has been replaced with automatic teller. The bank and second floor windows on both facades have beveled glass, wood frames, terra cotta sills and light brick surrounds. A canvas awning has been added along the north half of the west facade.

The storefronts on the south are divided by a pier. Both stores have recessed center entries and large single-light windows above low, black-tiled walls. There are single-light double doors to the store on the left and a solid door with sidelights to the store on the right. A new door recessed at the southern corner provides access to the second floor.  
(continued)

Recorded by Heritage Investment Corporation, 813 SW Alder, Portland, OR 97204 (228-0272)  
Allen, McMath-Hawkins, Architects, 213 SW Ash, Portland, OR 97204 (228-5154)

Initials \_\_\_\_\_ Date \_\_\_\_\_

Sources consulted: see attached.

A metal awning has been added below the multi-light leaded glass transom.

On the north side of the west elevation's second floor there are three openings with large, two-light, pivoted windows in the center and two-light casements at the sides. Two openings on the south repeat this pattern but are longer and have fixed center windows. At the parapet a belt course runs along the bottom of the frieze. There are dentils below the cornice and decorative brick work.

The street level of the north facade features five windows with single-light casements on each side of a large, fixed light and a single-light transom along the top. At the east corner there is a window containing two single-light casements below a transom, another with a large center light, single-light casements and a transom, and a door with a transom in the east corner. On the second floor there are seven openings with two-light, pivoted windows and narrower, two light casements on each side. A glass sign projecting off the northwest corner replaces a l-shaped neon sign for First National Bank.

### History

The Lebanon National Bank Building was erected by the Lebanon Development Company of which A. M. Reeves was president. He was vice president of the Lebanon National Bank and president and general manager of the Reeves-Clark department store which originally occupied the south half of the ground floor.

Reeves was born in Yamhill County in 1861. He graduated from Willamette University in 1887. He taught in Philomath and Halsey, and then became a postmaster. He moved to Lebanon in 1905, founding the Reeves Clark mercantile business in partnership with E. L. Clark and V. S. Wennersten. Reeves was chairman of the board during the erection of the high school and a Methodist Church trustee when their church was constructed. Reeves also served as councilman and mayor. He died in 1926 but his son reopened the store a year later.

The Lebanon National Bank moved into the north half of the building from offices further north on Main Street. Lebanon National Bank had been established by Dr. J. C. Booth with the aid of S. C. Stewart and attorneys W. M. Newport and N. M. Brown in 1909. Dr. Booth served as a state senator, mayor, physician, and worked on numerous community projects like the construction of a new hospital. In 1932, during the depression, there was a banking moratorium and the Lebanon National Bank merged into First National Bank of Lebanon. Dr. Booth stepped down as president, and First National closed their offices in their building at Main and Sherman. The officers of First National Bank included Joel Mayers and Samuel Garland. This bank had been established by J. P. Scroggin in 1896. In 1948 First National Bank was affiliated with 1st National Bank of Portland. In 1951 the bank became a branch of 1st National Bank of Oregon, now known as 1st Interstate Bank.

The bank currently owns the north half of the building and rents the rear of the south half, owned by the J. K. Weatherford Estate. Originally the bank was located in only the northwest corner with an I.G.A. market wrapping around it to appear on both north and west elevations. There was also a feed store on the west elevation which replaced the Clark-Reeves store. The store windows on the north elevation have been replaced with smaller windows where the bank has expanded.

Continuation Sheet 2 of 2  
Lebanon National Bank  
813 and 815 Main Street  
Map Reference Number: 93

Sources Consulted

1. "A. M. Reeves, A Prominent Businessman of Lebanon, Succumbs to Pleura-Pneumonia," Lebanon Express, March 1, 1922.
2. Interview with Dick Reeves, 25 March 1984.
3. Greening, Ronald, National Register of Historic Places Inventory--Nomination Form for Booth House. January 1980.
4. Sue McCracken, "Fire! Christine Seeke Smith Has Memorabilia of 1891 City Disaster," Lebanon Express. March 4, 1978.

