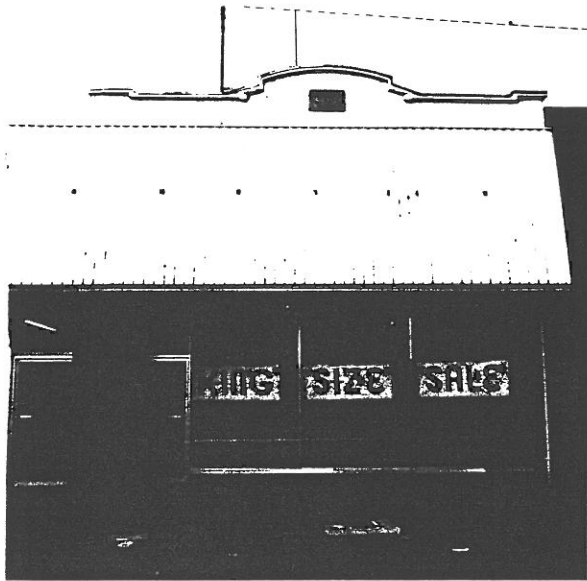


STATE OF OREGON INVENTORY  
OF HISTORIC PROPERTIES  
State Historic Preservation Office  
Oregon State Parks, Salem, OR 97310



County Linn  
Ranking \_\_\_\_\_  
Name  
(Common) Kellenberger Building  
(Historic) Kellenberger Building  
Address 846 Main Street  
Present Owner Dora Kellenberger Hall  
Address 525 East Ash Street  
Original Use Radio, Sporting Goods, Bike Repair  
Date of Construction 1928  
Map Reference Number 97

Physical description of property and statement of historical significance:

The Kellenberger Building's original facade is obscured with the exception of the stepped parapet which features a raised block with the date 1928. The remaining portion of the facade is clad with sheet metal and the street level features an aluminum frame glass door in the south corner and a full height window running the remaining length. The original multi-light transom has been removed along with a flat metal awning.

History

Ed Kellenberger built this store for a radio, sporting goods and bicycle repair shop. He purchased the property from Eleanor Everett Groves and H. R. Groves in 1928 and completed construction in the same year. In 1974 the facade was remodeled and the wall was removed between this building and the one to the south, which had been constructed as an addition around 1955.

Recorded by Heritage Investment Corporation, 813 SW Alder, Portland, OR 97204 (228-0272)  
Allen, McMath-Hawkins, Architects, 213 SW Ash, Portland, OR 97204 (228-5154)

Initials \_\_\_\_\_ Date \_\_\_\_\_

Sources consulted:

1. Historic photo from Capital Journal, April 3, 1957.
2. Survey questionnaire from Dora Kellenberger Hall, April 11, 1984.



FURNITURE STORE SALE

GIBBS FURNITURE  
BUDGET STORE  
KING SIZE SALE

REBUILT