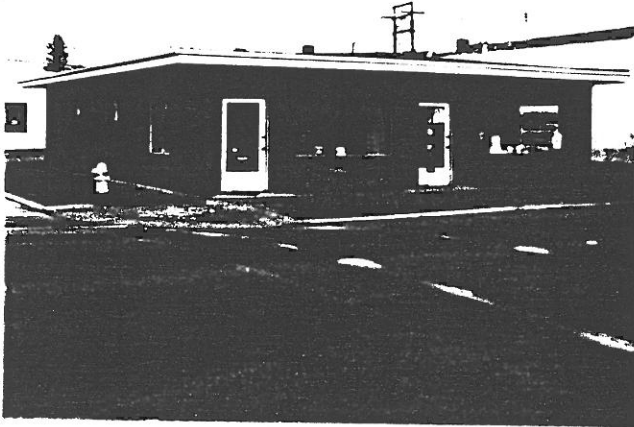


STATE OF OREGON INVENTORY
OF HISTORIC PROPERTIES
State Historic Preservation Office
Oregon State Parks, Salem, OR 97310



County Linn
Ranking _____
Name
(Common) Unknown
(Historic) Unknown
Address 880-890 Main Street
Present Owner Ferris Kirkpatric, et al
Address Standard Plaza, 12th Floor, Portland
Original Use Office
Date of Construction c. 1970
Map Reference Number 101

Physical description of property and statement of historical significance:

This is a modern, one-story brick building with a flat roof and square floor plan. There are two offices on the west facade with entries on the south and in the center of the facade. Each office has a large plate glass window with business name painted on the glass.

Recorded by Heritage Investment Corporation, 813 SW Alder, Portland, OR 97204 (228-0272)
Allen, McMath-Hawkins, Architects, 213 SW Ash, Portland, OR 97204 (228-5154)

Initials _____ Date _____

Sources consulted:



JOHN D. FIELDER
TRAINING AND CONSULTING
SALES SERVICE
REPAIR
481-1571

SANTANA EQUIPMENT
SALES REPAIR