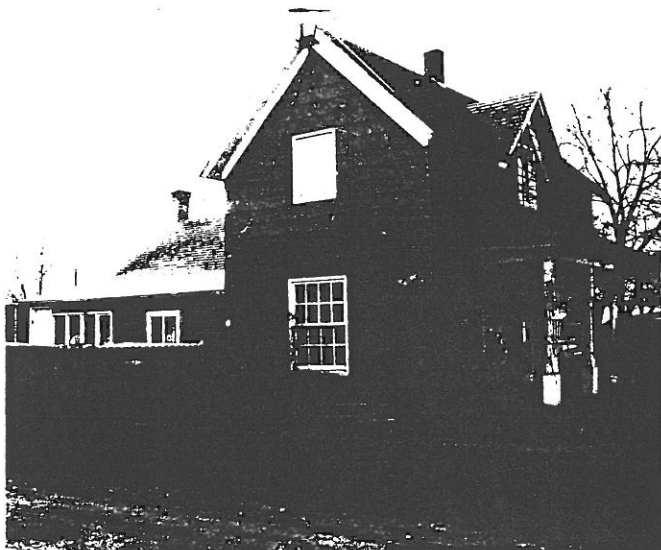


STATE OF OREGON INVENTORY  
OF HISTORIC PROPERTIES  
State Historic Preservation Office  
Oregon State Parks, Salem, OR 97310



County Linn  
Ranking \_\_\_\_\_  
Name  
(Common) Unknown  
(Historic) Unknown  
Address 80 Milton Street  
Present Owner D. A. and D. Palmer  
Address 80 Milton Street  
Original Use residence  
Date of Construction c. 1895  
Map Reference Number 149

-----  
Physical description of property and statement of historical significance:

Gothic Revival styling characterizes this one and a half story house with a steeply sloped gable roof and a rectangular floor plan paralleling the street. The walls are clad with large composition shingles. The hip roof front porch features four turned posts resting on new pedestals. There is a multi-light door in the center. The windows on each side have been altered to large, four-light, fixed sashes and the center gable window now contains a single light.

There is a flat roof, single story, garage addition on the west. Both gable ends have projected verges and single-light casement windows. The east facade features an eight/eight, double-hung window on the first floor. There is a one-story addition projecting off the south wall with a corbeled chimney on the gable end. The corbeled cap has been removed from the interior chimney at the center of the older section.

-----  
Recorded by Heritage Investment Corporation, 813 SW Alder, Portland, OR 97204 (228-0272)  
Allen, McMath-Hawkins, Architects, 213 SW Ash, Portland, OR 97204 (228-5154)

Initials \_\_\_\_\_ Date \_\_\_\_\_

Sources consulted:

