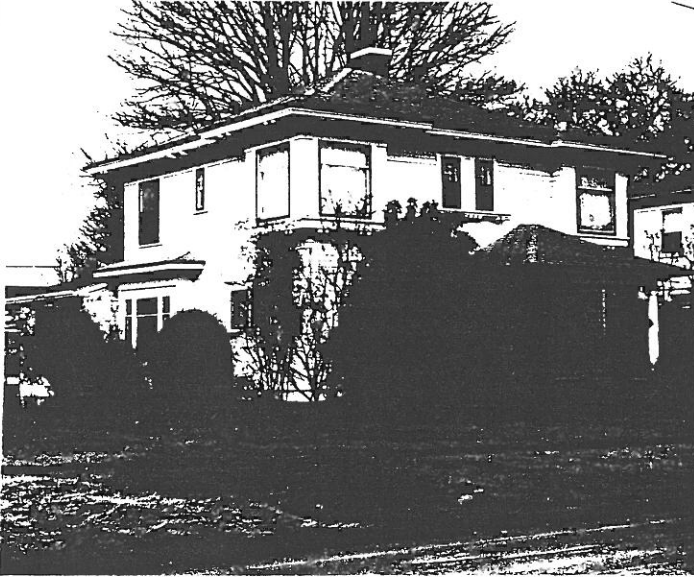


STATE OF OREGON INVENTORY
OF HISTORIC PROPERTIES
State Historic Preservation Office
Oregon State Parks, Salem, OR 97310



County Linn
Ranking _____
Name
(Common) Soule House
(Historic) Connett House
Address 412 Park Street
Present Owner Ella J. and Ramond J. Garboden
Address 412 Park Street
Original Use residence
Date of Construction 1902
Map Reference Number 35

Physical description of property and statement of historical significance:

The Arts and Crafts style Connett House is two stories tall with a pyramidal roof and pavilions on the second floor front corners. The front porch to the right of center has a hip roof and Tuscan columns. The entry door contains a tall oval light and is surrounded by wood pilasters supporting a cornice. The pavillions have sash windows with large single lights below and a smaller single light above. In the center of the facade is a pair of multi-light windows with a sill below. Paired brackets are located below the pavilions, the sill of the center windows, the boxed cornices of the porch and main roof.

The rectangular hip roofed bay on the left side of the south elevation contains a large center window and sidelights with transoms. In the right corner is located a pair of smaller windows with cornice moldings above them. There is a greenhouse addition on the rear. In the center of the second floor there is a small, multi-light window like those paired in the center of the front elevation. Located in the corner above the bay is a large one/one, double-hung window.

(continued)

Recorded by Heritage Investment Corporation, 813 SW Alder, Portland, OR 97204 (228-0272)
Allen, McMath-Hawkins, Architects, 213 SW Ash, Portland, OR 97204 (228-5154)

Initials _____ Date _____

Sources consulted:

1. Correspondence with Ray Garboden, April 5, 1984.
2. Sanborn Insurance Map, 1898 and 1913.

Continuation Sheet 1 of 1
Connett House
412 Park Street
Map Reference Number: 35

The north elevation is similar to the south except that in the rear corner there is a large window, instead of a bay, and the tall window in the center is located between floors. The corbeled cap on the interior central chimney has been removed. The exterior walls are clapboard siding and the foundation is concrete. The back porch and room were added in 1941.

History

This house was built for Madison Connett. It was built by Albert I. and Louis Crandall of the Crandall Brothers Planing Mill. Due to their involvement in a mill which did a wide variety of construction and manufacturing, the builders were able to provide materials of industrial quality and type, such as for the plumbing, as a way of cutting costs.

The second owner was a Harold Soule who lived at this address for over 40 years while employed at the post office.

