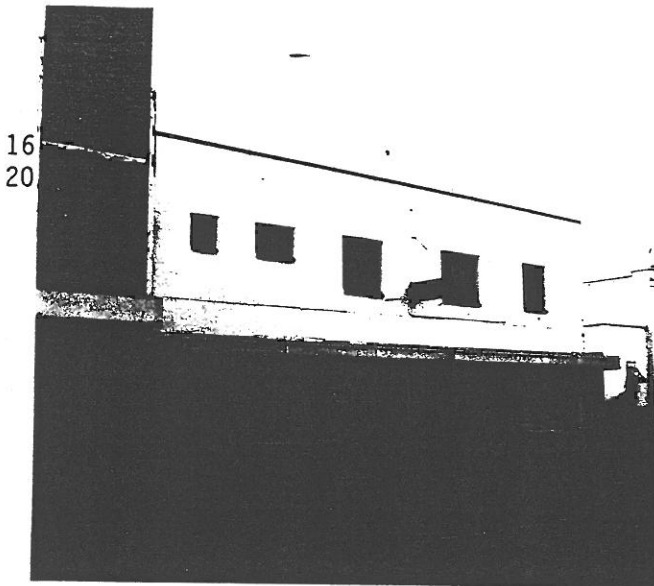


STATE OF OREGON INVENTORY
OF HISTORIC PROPERTIES
State Historic Preservation Office
Oregon State Parks, Salem, OR 97310



County Linn
Ranking _____
Name
(Common) Unknown
(Historic) Unknown
Address 743 Park Street
Present Owner Leslie Pullen
Address c/o B. D. Byers, 32215 S. Main Road
Original Use Apartment and Offices
Date of Construction c. 1938
Map Reference Number 120

Physical description of property and statement of historical significance:

Typical of many late 1930's buildings in Lebanon, this two-story concrete building is clad with colored glazed tile, metal trim and stucco on the upper portion. There are three doorways on the west facade and three large light windows. Above the flat metal awning there are five metal casement windows of varying sizes.

Since construction the upper floor has been a doctor's office (an osteopath originally) while the ground floor has been occupied by a furniture store.

Recorded by Heritage Investment Corporation, 813 SW Alder, Portland, OR 97204 (228-0272)
Allen, McMath-Hawkins, Architects, 213 SW Ash, Portland, OR 97204 (228-5154)
Initials _____ Date _____

Sources consulted:

Interview with Clay Nichols and Frank Grove,
May 12, 1984.



SEE

SEE SIGN